

Department of Health

Sanford Zelnick D.O., M.S.
Director



COVID-19 RESPONSE
SUMTER COUNTY HEALTH DEPARTMENT AND
COMMUNITY PARTNERS

Brief Timeline

- 12.8.2019 First patient in Wuhan sought medical attention for pneumonia
- Global spread through Asia and Europe
- 1.21.20 First U.S. case (Washington state); travel-related from Wuhan



Timeline Florida Actions

- 3.1.20 Florida announced two cases from Manatee and Hillsborough counties
- 3.9.20 Governor DeSantis announced state of emergency
- 3.20.20 Governor DeSantis changed restaurant services to take out only
- 3.23.20 Governor DeSantis announced self-isolation measures for travelers from NY, NJ and CT
- 3.27.20 Governor DeSantis announced self-isolation measures for travelers from LA



Timeline Florida Actions

- 3.30.20 Stay at home order for SE Florida counties
- 4.1.20 Governor DeSantis announced state-wide stay at home order
- 4.17.20 Beaches slowly re-open
- 5.15.20 Governor DeSantis ordered full Phase 1 re-opening 18 May



Sumter County Health Department Actions

- 3.16.20- Drive through testing established 3 days a week
- 3.17.20- First case identified (travel-related)
- 3.17.20 Testing kits sent to Langley Health Services and Premier Medical



Sumter County Health Department Actions

- Five press releases informed the public of the governor's recent actions (at the time), with recommendations on how to stay safe in addition to social media (Nextdoor)
- 3.12.20 Sumter County Health Department established a call center staffed by three epidemiologists and two health educators (all masters degree trained)



Sumter County Health Department Actions

- Lake Panasoffkee Church
 - Church service date 3.15.20
 - Number Cases: 57 cases
 - 32 confirmed
 - 25 probable
 - Number deaths: 4
 - Number contact tracings:
 - 95 households associated with the church
 - 191 individuals interviewed



County Surveillance Actions

- Nursing Homes:
 - 4.25.20, 5.2.20 -Incident Management team testing at nursing homes
- Joint Assessments (CHD, AHCA, IMT)
 - Number facilities assessed: 4
 - Number of facilities tested: 2
 - Number tested: 122
 - Results:
 - Positive: 3
 - Negative: 110
 - Rejected: 9
 - Rate Positive: 2.65%
- 5.13.20 Mass testing at Lake Panasoffkee
 - 81 community members tested
 - 81 negative, 0 positive



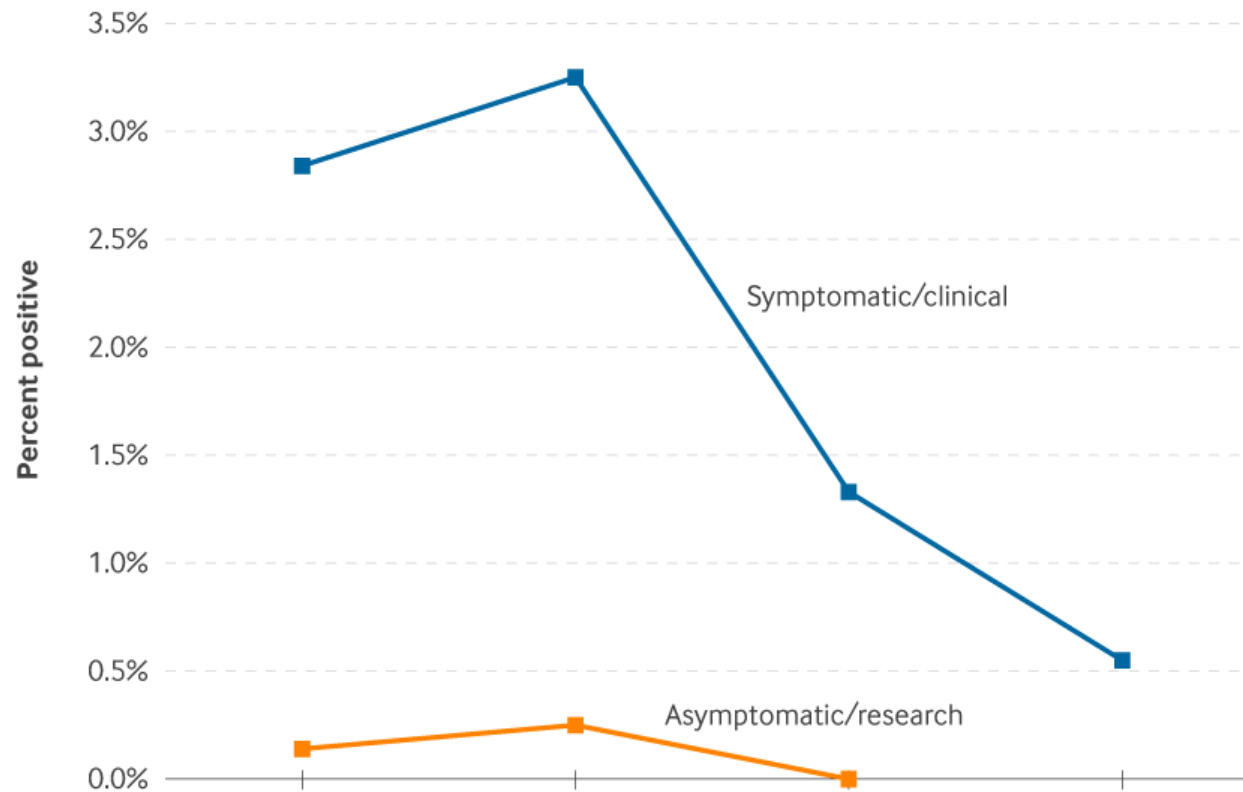
Community Surveillance

- UF-Villages Health testing polo grounds 3.23-4.17.20
 - 2,130 symptomatic clients, 2,130 well clients
 - For symptomatic clients:
 - Average weekly test positive among Villages residents 1.86%
 - Average weekly test positive among others 2.92%
 - Overall positive rate 2.11%
 - For well clients:
 - Three test positive among 2,130 people (0.14%)



UF- The Villages Health Study

Percent Positive Covid-19 Cases by Week



Source: The authors

NEJM Catalyst (catalyst.nejm.org) © Massachusetts Medical Society



Corrections

- Total Cases: 124
 - Sumter CI: 117
 - Inmates: 103
 - Staff: 14
 - Hospitalizations: 8
 - Deaths: 2
 - Coleman FCC: 7
 - Inmates: 2
 - Staff: 5
 - Hospitalizations: 0
 - Deaths: 0

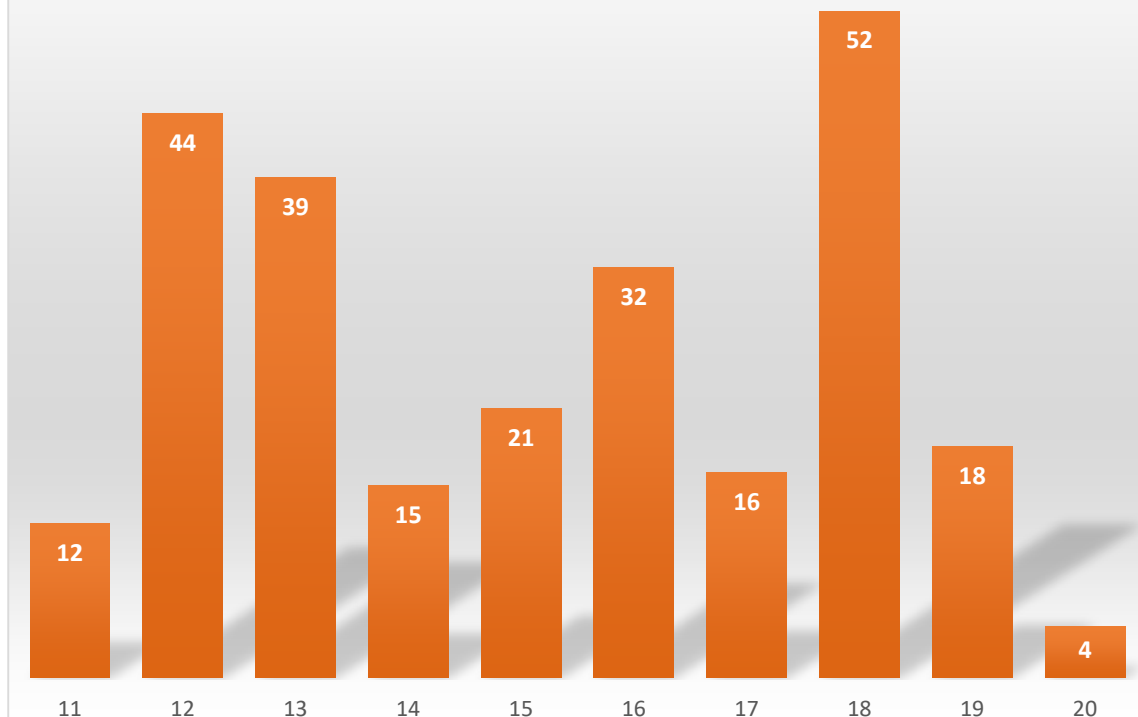


Summary

Tests, Case Counts and Outcomes

- Number Tested: 3,451
- Case Count: 253
- Confirmed Cases Interviewed: 227
 - 89.7% of cases interviewed
- Released from surveillance: 206
- Contact Tracings: 402
- Hospitalizations: 44
- Deaths: 16

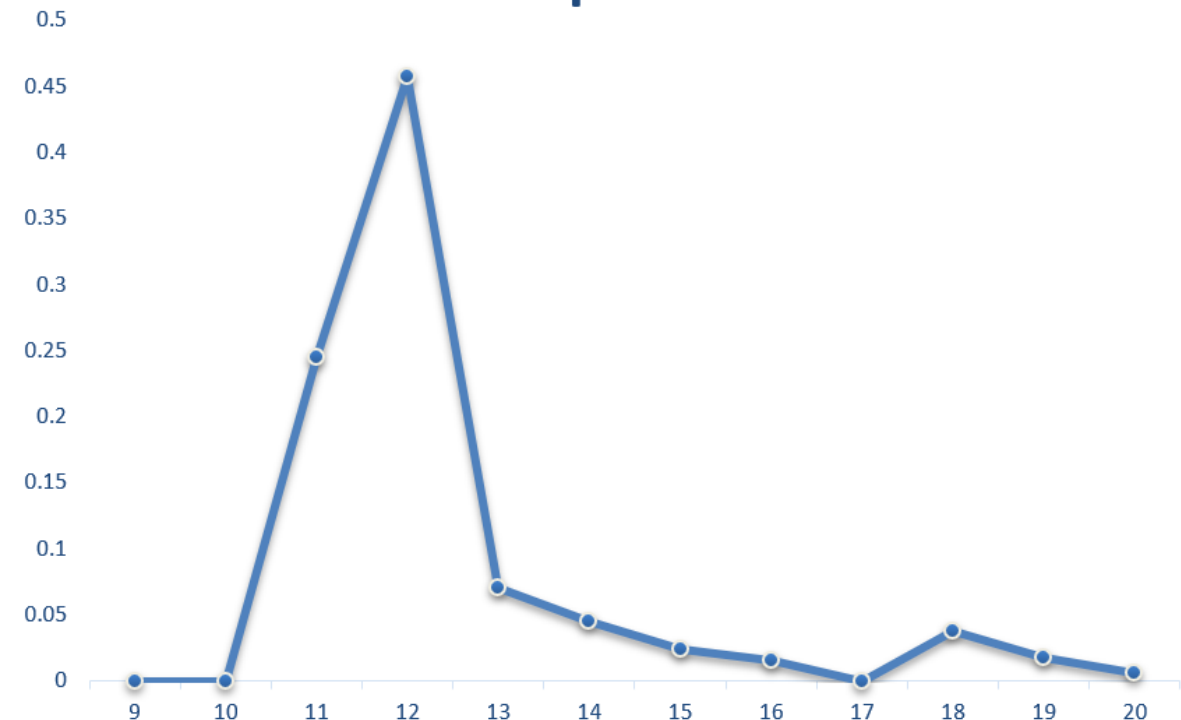
Sumter County COVID-19 Case Count by Week from 8 March through 16 May



COVID-19 Positive Test Ratio

- FDOH positivity target: $\leq 10\%$
- Sumter cumulative rate with Corrections: 7.699%
- Sumter cumulative rate without Corrections: 7.679%
- Most recent full week Sumter rate: 0.056%
- Additionally, The Villages Hospital performed 1,400 rapid tests recently with 0 positives

Sumter Positive COVID Test Rate by CDC Report Week



Recommendations

- Social distancing
- Face covers
- Hand washing
- Don't attend community events/meetings/gatherings if sick
- Compliance with 14 day quarantine for travelers from NY, NJ, CT, and LA
- Explore messaging opportunities
- On-going surveillance (a dynamic situation)



Thanks and Questions

